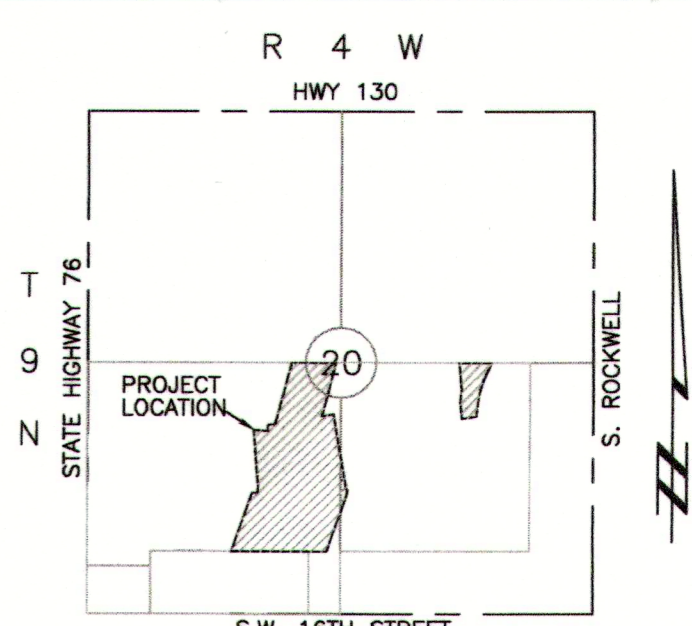


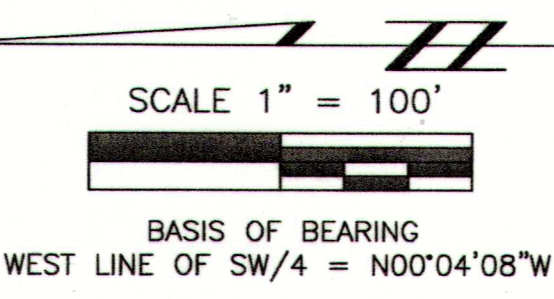
FINAL PLAT OF PULCHELLA SEC. 3

A PART OF THE SW/4 OF SECTION 20, T-9-N, R-4-W, I.M.
CITY OF NEWCASTLE, McCLAIN COUNTY, OKLAHOMA

E-3 ZONING
SHEET 2 OF 2



This survey meets the Oklahoma Minimum Standards for the Practice of Land Surveyors as adopted by the Oklahoma State Board of Registration for Professional Engineers and Land Surveyors; and that said Final Plat complies with the requirements of Title 11 Section 41-108 of the Oklahoma State Statutes.



CURVE TABLE	NUMBER	Radius	Delta Angle	Chord Bearing	Chord Length	Arc Length
BC1	270.00	09°41'01"	N83°59'59"E	45.58	45.63	
BC2	330.00	04°32'45"	S88°53'07"E	26.18	26.18	
BC3	270.00	11°39'24"	N89°58'16"E	54.84	54.93	
BC4	70.00	02°08'11"	S81°17'00"W	2.57	2.57	
CL4	100.00	18°44'10"	N09°49'29"E	32.56	32.70	
CL5	100.00	07°46'01"	N15°18'34"E	13.55	13.56	
CL6	100.00	04°16'27"	N76°21'53"W	7.46	7.46	
CL7	100.00	17°50'34"	N87°25'24"W	31.02	31.14	
CL8	100.00	07°52'56"	S79°42'51"W	13.75	13.76	
CL9	300.00	36°19'24"	S86°03'56"E	187.02	190.18	
CL10	300.00	16°17'47"	N76°03'09"W	85.04	85.33	
CL11	100.00	05°22'20"	S10°25'57"E	9.37	9.38	
CL12	100.00	03°05'44"	N09°17'39"W	5.40	5.40	
CL13	100.00	16°16'42"	N07°40'57"W	28.32	28.41	
CL14	100.00	08°48'40"	S11°24'58"E	15.36	15.38	
CL15	100.00	01°12'45"	N82°16'30"E	2.12	2.12	
CL16	100.00	03°43'24"	S81°01'11"W	6.50	6.50	
CL17	300.00	09°41'01"	N83°59'59"E	50.64	50.70	
CL18	100.00	25°43'40"	S02°01'19"W	44.53	44.90	
C19	330.00	04°25'08"	S88°49'19"E	25.45	25.45	
C20	52.00	26°55'05"	S70°48'26"E	79.13	236.80	
C21	70.00	07°52'56"	S79°42'51"W	9.62	9.63	
C22	52.00	26°55'05"	S70°48'26"E	79.13	236.80	
C23	130.00	25°43'40"	S02°01'19"W	57.89	58.37	
C24	52.00	26°55'05"	N75°06'51"W	79.13	236.80	
C25	70.00	01°12'45"	N82°16'30"E	1.48	1.48	
C26	330.00	01°06'45"	S68°27'38"E	6.41	6.41	
C27	130.00	01°12'45"	N82°16'30"E	2.75	2.75	
C28	70.00	04°16'27"	N76°21'53"W	5.22	5.22	
C29	40.00	40°27'33"	S35°06'55"W	27.66	28.25	
C30	40.00	40°27'33"	N05°20'38"W	27.66	28.25	
C31	70.00	25°43'40"	S02°01'19"W	31.17	31.43	
C32	70.00	03°43'24"	S81°01'11"W	4.55	4.55	
C33	70.00	08°48'40"	S11°24'58"E	10.75	10.76	
C34	130.00	08°48'40"	S11°24'58"E	19.97	19.99	
C35	130.00	16°16'42"	N07°40'57"W	36.81	36.93	
C36	70.00	16°16'42"	N07°40'57"W	19.82	19.89	
C37	40.00	40°27'33"	S01°02'12"E	27.66	28.25	
C38	40.00	40°27'33"	N36°25'21"E	27.66	28.25	
C39	70.00	05°22'20"	S10°25'57"E	6.56	6.56	
C40	130.00	05°22'20"	S10°25'57"E	12.18	12.19	
C41	130.00	16°17'47"	N76°03'09"W	93.54	93.66	
C42	130.00	03°05'44"	N09°17'39"W	7.02	7.02	
C43	70.00	03°05'44"	N09°17'39"W	3.78	3.78	
C44	270.00	23°31'41"	S79°40'06"E	110.10	110.87	
C45	130.00	04°16'27"	N76°21'53"W	9.70	9.70	
C46	40.00	40°27'33"	N39°25'21"E	27.66	28.25	
C47	40.00	40°27'33"	S01°02'12"E	27.66	28.25	
C48	330.00	16°05'42"	N83°49'15"E	92.40	92.70	
C49	130.00	18°44'10"	N09°49'29"E	42.32	42.51	
C50	70.00	18°44'10"	N09°49'29"E	22.79	22.89	
C51	130.00	07°46'01"	N15°18'34"E	17.61	17.62	
C52	70.00	07°46'01"	N15°18'34"E	9.48	9.49	
C53	130.00	07°52'56"	S79°42'51"W	17.87	17.88	
C54	270.00	27°57'11"	N81°52'51"W	130.42	131.73	

LEGEND
 L.O.N.A. = LIMITS OF NO ACCESS
 • = SET IRON PIN
 ○ = FOUND IRON PIN

By: *MP*, Deputy
 Return to: *Keep on file*
 CAD #4
 PG. 46 + 46



1-2022-002996 Book 2767 Pg 318
 03/19/2022 8:00am Pg 0318-0318
 Fee \$35.00 Doc \$0.00
 Pam Baker - McClain County Clerk
 State of OK

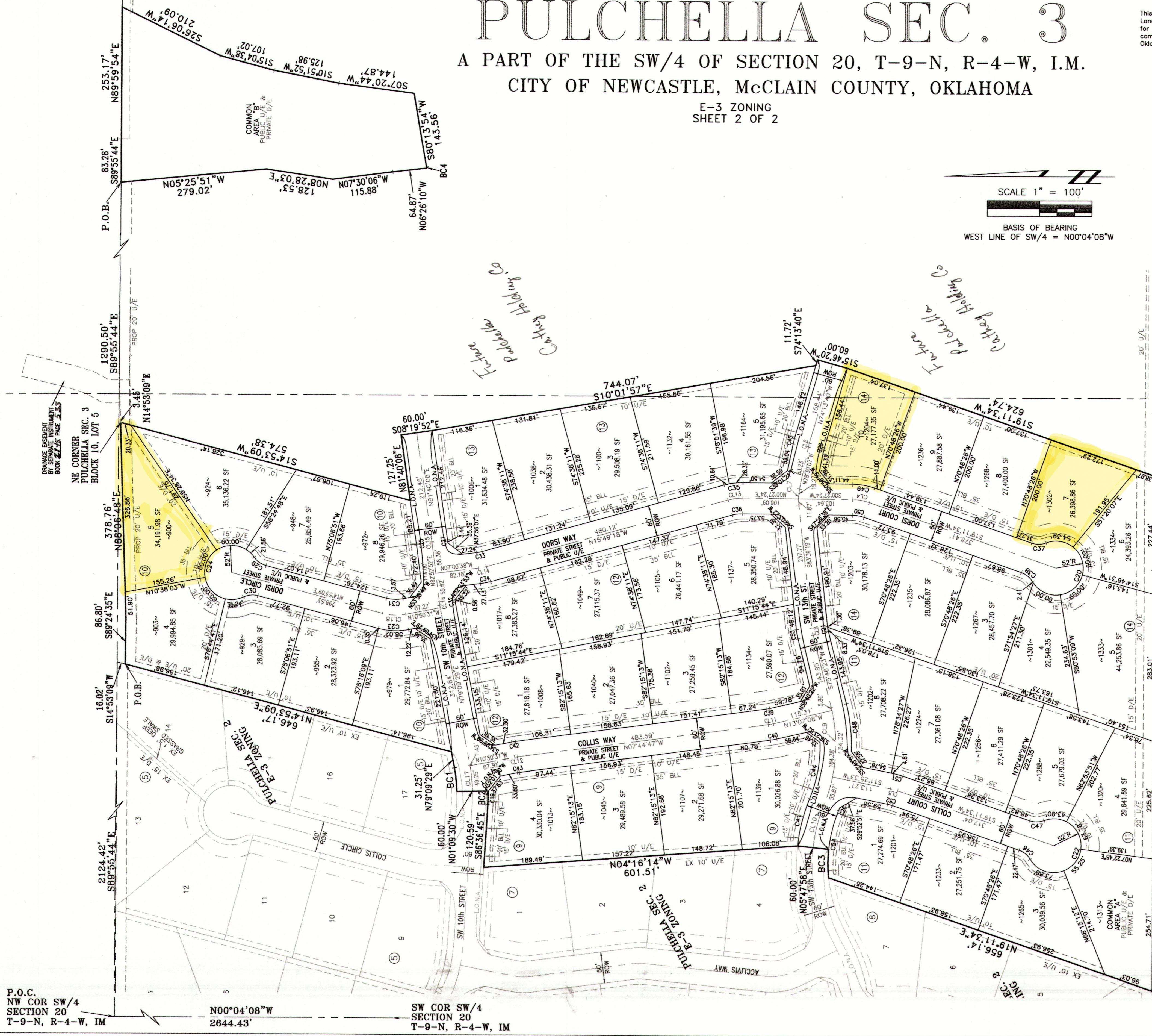
LEGAL DESCRIPTION

A Tract of land located in the SW Quarter (SW/4) of Section Twenty (20), Township Nine (9) North, Range Four (4) West of the Indian Meridian (I.M.), McClain County, Said Tract is more particularly described as follows:

Commencing at the NW corner of said SW/4; Thence S89°55'44"E a distance of 2124.42 feet; Thence S14°53'09"W a distance of 16.02 feet to the POINT OF BEGINNING (POB); Thence from said POB S89°24'35"E a distance of 86.80 feet; Thence N88°06'48"E a distance of 378.76 feet; Thence S14°53'09"W a distance of 574.38 feet; Thence N81°40'08"E a distance of 127.25 feet; Thence S08°19'52"E a distance of 60.00 feet; Thence S10°01'57"E a distance of 744.07 feet; Thence S74°13'40"E a distance of 117.72 feet; Thence S15°48'20"W a distance of 60.00 feet; Thence S19°11'34"W a distance of 624.74 feet; Thence N89°51'23"W a distance of 180.83 feet; Thence N89°56'04"W a distance of 809.96 feet; Thence N19°11'34"E a distance of 656.14 feet to a point on a curve to the right, said curve having a Radius of 270.00 feet, a Delta Angle of 11°39'24", a Chord Bearing of N89°58'16"E, and a Chord Length of 54.84 feet; Thence along said curve an Arc Length of 54.93 feet; Thence N05°47'58"E a distance of 60.00 feet; Thence N04°16'14"W a distance of 601.51 feet; Thence S86°38'45"E a distance of 120.59 feet to a point of curvature to the left, said curve having a Radius of 330.00 feet, a Delta Angle of 04°32'45", a Chord Bearing of S88°53'07"E, and a Chord Length of 26.18 feet; Thence along said curve an Arc Length of 26.18 feet; Thence N01°09'30"W a distance of 60.00 feet to a point on a curve to the left, said curve having a Radius of 270.00 feet, a Delta Angle of 09°41'01", a Chord Bearing of N83°59'59"E, and a Chord Length of 45.58 feet; Thence along said curve an Arc Length of 45.63 feet; Thence N75°09'29"E a distance of 31.25 feet; Thence N14°53'09"E a distance of 646.17 feet to the POINT OF BEGINNING. Containing 35.59 Acres more or less and subject to any Easements or Rights-of-Way of Record.

AND

Commencing at the NE corner of Block 10, Lot 5; Thence N14°53'09"E a distance of 3.45 feet; Thence S89°55'44"E a distance of 1290.50 feet to the POINT OF BEGINNING (POB); Thence from said POB S89°55'44"E a distance of 83.28 feet; Thence N89°58'16"E a distance of 253.17 feet; Thence S26°06'14"W a distance of 210.09 feet; Thence S15°04'38"W a distance of 107.02 feet; Thence S10°51'52"W a distance of 143.56 feet to a point of curvature to the right, said curve having a Radius of 70.00 feet, a Delta Angle of 02°08'11", a Chord Bearing of S81°17'00"W, and a Chord Length of 2.57 feet; Thence along said curve an Arc Length of 2.57 feet; Thence N06°28'10"W a distance of 64.87 feet; Thence N07°30'06"W a distance of 115.88 feet; Thence N08°28'03"E a distance of 128.53 feet; Thence N05°25'51"W a distance of 279.02 feet to the POINT OF BEGINNING. Containing 2.83 Acres more or less and subject to any Easements or Rights-of-Way of Record.



P.O.C.
 NW COR SW/4
 SECTION 20
 T-9-N, R-4-W, IM

N00°04'08"W
 2644.43'

SW COR SW/4
 SECTION 20
 T-9-N, R-4-W, IM

PULCHELLA SEC. 3
 PLAT BY:
 ANCHOR ENGINEERING, L.L.C.
 CA 4161 EXP. 6-30-22
 12817 South McCloud Road
 McCloud, Oklahoma 74851
 405-740-8898
 CA120027
 SHEET 2 OF 2